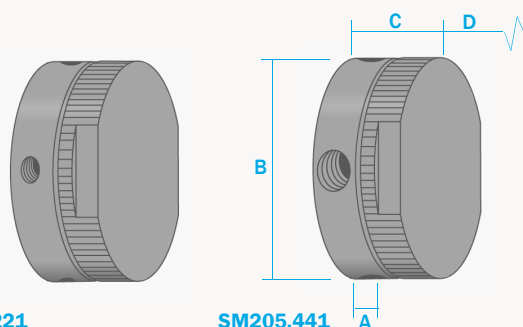


SM205 Series Membrane Housings

316L Stainless Steel
Pressure, 100 Bar
Ports, 1/4" or 1/2"
Membrane, MT.61.□



SM205.221

SM205.441

The large capacity SM205 membrane housings use a porous PTFE membrane, which is supported by a sintered porous stainless steel disc on the outlet side. The wet sample gas enters through the inlet port and because the membrane will only allow molecules of gas or vapour to pass through to the outlet all liquid is stopped. Any liquid in the sample will flow to the drain port. This port can also be used as a bypass function for the main flow. Two grades of membrane are available and these are detailed in the data sheets CF/1.2/051 and CF/1.2/052.

The housing design allows a quick change of the membrane as all the line connections are arranged in the body of the housing and the threaded cap means no tools are required for access.

Standard housings have NPT ports and include Viton gaskets. Other gasket types are available as an option. BSPT and BSPP port types are also available.

The housings are free from welds and comply with NACE MR-01-75.

Principal Specifications

Housing Model	SM205.221	SM205.441
Port Size - NPT	1/4"	1/2"
Drain & Bypass Port - NPT	1/4"	1/2"
Maximum Pressure - Bar	100	100
Maximum Temperature - °C	100	100
Materials of Construction (1)		
Head, Bowl & Internals	316L	316L
Gaskets	Viton	Viton
Principal Dimensions		
A - mm	15	15
B - mm	100	100
C - mm	64	64
D - mm	30	30
Volume - cc	20	20
Weight - kg	0.8	0.8
Accessories		
Standard Gasket Set	GVSM205	GVSM205
Kalrez Gasket Set	GKSM205	GKSM205
Nitrile Gasket Set	GNSM205	GNSM205
EPDM Gasket Set	GESM205	GESM205
Mounting Bracket	MBSM205	MBSM205
Membrane Code (2)	MT.61.□	MT.61.□

Notes (1) Material abbreviations - 316L = 316L Stainless Steel, PTFE = Polytetrafluoroethene, EPDM = Ethylene-Propylene

(2) Replace the □ with the grade required, e.g. MT.61.M1 or MT.61.M2