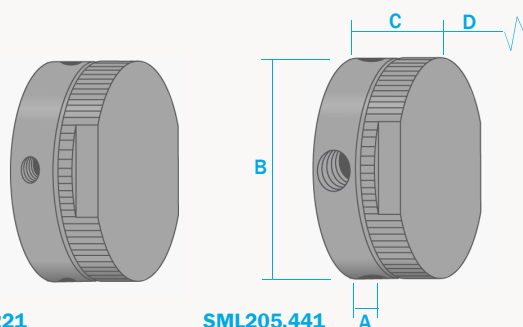


SML205 Series Membrane Housings

316L Stainless Steel
Pressure, 100 Bar
Ports, 1/4" or 1/2"
Membrane, MT.61.M8



SML205.221

SML205.441

The SML205 membrane housings are designed to remove water from a liquid hydrocarbon sample. They use a porous PTFE membrane, which is supported by a sintered porous stainless steel disc on the outlet side. The M8 grade membrane details can be found on data sheet CF/1.2/053.

The housing design allows a quick change of the membrane as all the line connections are arranged in the body of the housing and the threaded cap means no tools are required for access.

Standard housings have NPT ports and include Viton gaskets. Other gaskets types are available as an option. BSPT and BSPP port types are also available.

The housings are free from welds and comply with NACE MR-01-75.

Principal Specifications

Housing Model	SM205.221	SM205.441
Port Size - NPT	1/4"	1/2"
Drain & Bypass Port - NPT	1/4"	1/2"
Maximum Pressure - Bar	100	100
Maximum Temperature - °C	100	100
Materials of Construction (1)		
Head, Bowl & Internals	316L	316L
Gaskets	Viton	Viton
Principal Dimensions		
A - mm	15	15
B - mm	100	100
C - mm	78	78
D - mm	30	30
Volume - cc	20	20
Weight - kg	3.2	3.2
Accessories		
Standard Gasket Set	GVSM205	GVSM205
Kalrez Gasket Set	GKSM205	GKSM205
Nitrile Gasket Set	GNSM205	GNSM205
EPDM Gasket Set	GESM205	GESM205
Mounting Bracket	MBSM205	MBSM205
Membrane Code	MT.61.M8	MT.61.M8

Notes (1) Material abbreviations - 316L = 316L Stainless Steel, PTFE = Polytetrafluoroethene, EPDM = Ethylene-Propylene