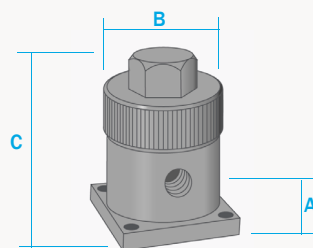


SM015 SP76 Membrane Housings

316L Stainless Steel
Pressure, 100 Bar
Ports, SP76 & NPT
Membrane, MT.19.□



SM015.R11

The SM015 series SP76 membrane housings are designed for SP76 compliant modular sample systems. The housings use a porous PTFE membrane which is supported by a sintered porous stainless steel disc on the outlet side. The wet sample gas enters through the inlet port and because the membrane will only allow molecules of gas or vapour to pass through to the outlet all liquid is stopped.

Any liquid in the sample will flow to the 1/8" NPT drain port. The housings should only be used on substrates that are mounted in the horizontal plane with the drain port at the lowest point below the inlet and outlet ports.

The housing design allows a quick change of the membrane as all the line connections are arranged in the body of the housing and the threaded cap means no tools are required for access.

Principal Specifications

Housing Model	SM015.L11	SM015.R11
Inlet/Outlet Connections	SP76	SP76
Drain - NPT	1/8"	1/8"
Maximum Pressure - Bar	100	100
Maximum Temperature - °C	150	150
Mounting		
Substrate Flow Direction	Left to Right	Right to Left
Substrate Plane	Horizontal	Horizontal
Inlet	Hole 2	Hole 2
Outlet	Hole 3	Hole 1
Materials of Construction (1)		
Head, Bowl & Internals	316L	316L
Gaskets	Viton	Viton
Principal Dimensions		
A - mm	21.5	21.5
B - mm	38	38
C - mm	58	58
Volume - cc	2	2
Weight - kg	0.3	0.3
Accessories		
Standard Gasket Set	GVSM015	GVSM015
Kalrez Gasket Set	GKSM015	GKSM015
Nitrile Gasket Set	GNSM015	GNSM015
EPDM Gasket Set	GESM015	GESM015
Membrane Code (2)	MT.19.□	MT.19.□

(1) Material abbreviations - 316L = 316L Stainless Steel, EPDM = Ethylene-Propylene

(2) Replace the □ with the grade required, e.g. MT.19.M1, MT.19.M2