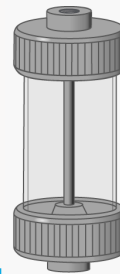
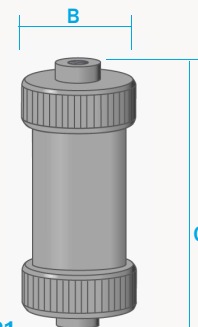


# DG211 & DS212 Series Drain Vessels

**316L Stainless Steel & Glass**  
**Pressure, 7 or 10 Bar**  
**Ports, 1/8" or 1/4"**



DG211.221



DS212.221

These drain vessels are specified to increase the housing capacity in coalescing applications where an automatic float drain cannot be used. They are constructed from 316L stainless steel and have either a stainless steel or a Pyrex glass bowl with a bowl guard (not shown).

Standard housings have NPT ports and include Viton gaskets. Other gaskets types are available as an option.

## Principal Specifications

Housing Model	DG211.111	DG211.221	DS212.111	DS212.221
Port Size - NPT	1/8"	1/4"	1/8"	1/4"
Drain - NPT	1/8"	1/4"	1/8"	1/4"
Maximum Pressure - Bar	7	7	10	10
Maximum Temperature - °C	100	100	200	200
<b>Materials of Construction (1)</b>				
Head & Internals	316L	316L	316L	316L
Bowl	Pyrex Glass	Pyrex Glass	316L	316L
Gaskets	Viton	Viton	Viton	Viton
<b>Principal Dimensions</b>				
B - mm	56	56	56	56
C - mm	126	126	126	126
Volume - cc	105	105	105	105
Weight - kg	0.8	0.8	0.8	0.8
<b>Accessories</b>				
Standard Gasket Set	GVSG211	GVSG211	GVSG211	GVSG211
PTFE Gasket Set	GTSG211	GTSG211	GTSG211	GTSG211
Kalrez Gasket Set	GKSG211	GKSG211	GKSG211	GKSG211
Nitrile Gasket Set	GNSG211	GNSG211	GNSG211	GNSG211
EPDM Gasket Set	GESG211	GESG211	GESG211	GESG211

**Notes** (1) Material abbreviations - 316L = 316L Stainless Steel, PTFE = Polytetrafluoroethene, EPDM = Ethylene-Propylene