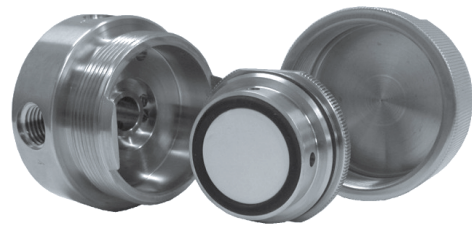


Membrane Applications

Our membrane housings use a porous PTFE membrane supported by a sintered stainless steel disc on the outlet side. The wet sample gas enters through the inlet port and because the membrane will only allow molecules of gas or vapour to pass all liquid to the outlet is stopped.



Three standard size PTFE membranes give a range of flow rate options. The membranes and gaskets are industry standard giving complete interchangeability.

The unique housing designs allow the membrane to be serviced without removing any pipework.

The SM125 series housing have the advantage of both a coalescing filter element and a PTFE membrane in a single unit. The wet sample gas enters the inlet port and through the coalescing element to remove the bulk of the liquid and then to the membrane. These housings also have an additional port that gives a bypass function.



New!