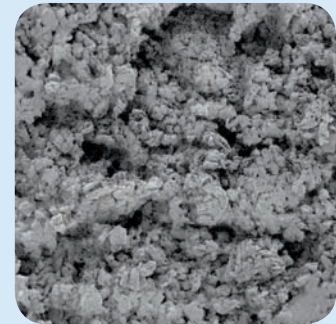


### PTFE Filter Elements

PTFE filter elements are produced by sintering pure PTFE granules, no other substances are used in the construction. These filter elements are usually offered when only 100% pure PTFE can be used. Normally it is preferable to offer a K type disposable filter element, if these are suitable, as both pressure drop and service life characteristics are superior to the PTFE filters.

The advantages of PTFE is the higher maximum temperature, up to 200°C, and a better chemical resistance to certain substances. PTFE elements can be ultrasonically cleaned.

PTFE filter elements can be supplied in 2 or 20 micron.



Sintered PTFE Granules

#### Standard Sizes

Filter Elements are available in a wide range of standard diameters and lengths. These are based on traditional industry standard sizes and allow the elements to be installed in other proprietary equipment.

10.57.□ 12.32.□ 12.57.□ 25.64.□ 25.178.□ 38.58.□ 38.152.□ 45.127.□ 51.89.□ 51.230.□ 51.476.□

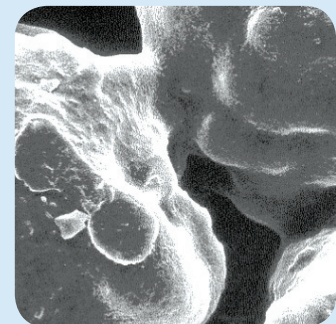
Replace the □ in the part numbers shown with the grade T2 or T20.

### PE Filter Elements

These polyethylene filter elements are sintered using pure PE granules. The maximum temperature is 150°C

Ideal for applications where a low cost plastic filter element is required. Due to the method of the construction these filter elements do not require any seals.

PE elements can be supplied in a number of grades - 2, 10, 20, 40 & 100 micron.



PE Granules

#### Standard Sizes

Filter Elements are available in a wide range of standard diameters and lengths. These are based on traditional industry standard sizes and allow the elements to be installed in other proprietary equipment.

10.57.□ 12.32.□ 12.57.□ 25.64.□ 25.178.□ 38.58.□ 38.152.□ 45.127.□ 51.89.□ 51.230.□ 51.476.□

Replace the □ in the part numbers shown with the grade, PE2, PE10, PE20, PE40, PE100

### Special Sizes

Both the PTFE and PE elements can be supplied with special diameters and lengths.

Let us know what you need.