

NNS241

Inverted Polyamide Filter Housing

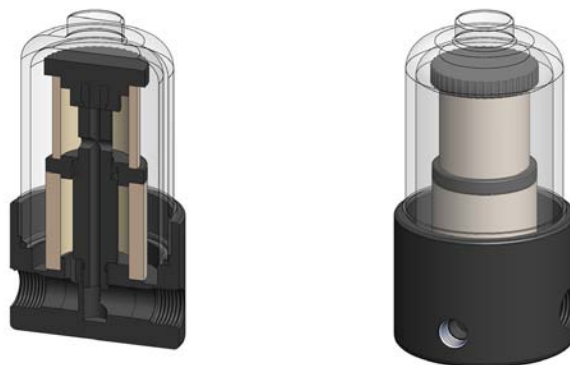
| | |
|------------------|------------------------------|
| Materials | Polyamide |
| Pressure | 7 Bar |
| Ports | 1/8" & 1/4" |
| Element | 25.30.□ & 25.35.□ |

NNS filter housings are constructed from polyamide and the bowl also uses a clear polyamide.

The housings are fitted with a coalescing pre-filter and a particulate filter that are of different lengths making incorrect installation impossible. The short bowl gives a low internal volume for fast response times.

The housing is designed so the ports and drain connection are all arranged in the head. This means that the drain does not have to be disconnected to change the filter element.

Standard housings have NPT ports and Viton seals.



Technical Specifications

| Housing Model | NNS241.111 | NNS241.211 |
|--------------------------------------|------------|------------|
| Port Size | 1/8" NPT | 1/4" NPT |
| Drain | 1/8" NPT | 1/4" NPT |
| Maximum Pressure, Bar | 7 | 7 |
| Maximum Temperature, °C | 50 | 50 |
| Materials of Construction (1) | | |
| Head, Bowl & Internals | PA | PA |
| Seal (2) | Viton | Viton |
| Filter Element Code - 1st Stage (3) | 25.35.□ | 25.35.□ |
| Filter Element Code - 2nd Stage | 25.30.□ | 25.30.□ |
| Principal Dimensions in mm | | |
| Diameter | 62 | 62 |
| Height | 108 | 108 |
| Volume, cc | 115 | 115 |
| Weight, kg | 0.2 | 0.2 |

Notes

(1) Material abbreviations, PA = Polyamide

(2) Add suffix for other seal types, Chemraz = .C, Nitrile = N, Kalrez = .K, EPDM = .E, Silicone = .S, (e.g. NNS241.211.E)

(3) Replace the □ with the grade required, e.g. 25.35.8CK, 25.30.6K