

SO Series

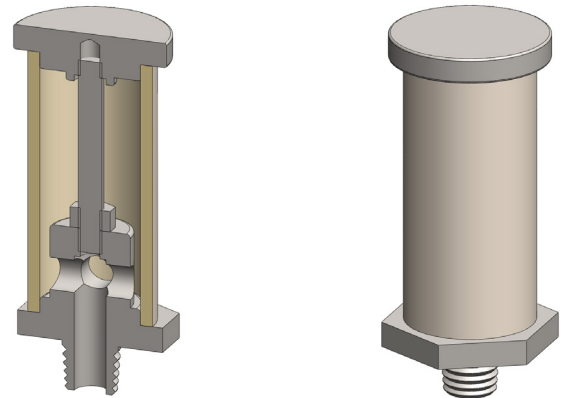
End of Line Filter Housing

Materials 316L Stainless Steel
Ports 1/8" to 1/2"
Element 12.32.□ to 25.64.□

The SO series filter housings are constructed entirely from 316L stainless steel and are supplied with a range of connections.

The housings are suitable for gas and liquid end of line applications.

These housings have NPT male ports as standard.



Technical Specifications

| Housing Model | SO110.101 | SO110.201 | SO120.101 | SO120.201 | SO210.201 | SO210.401 | SO230.201 | SO230.401 |
|---------------------------------------|-----------|-----------|-----------|-----------|-----------|-----------|------------|------------|
| Port Size | 1/8" NPT | 1/4" NPT | 1/8" NPT | 1/4" NPT | 1/4" NPT | 1/2" NPT | 1/4" NPT | 1/2" NPT |
| Maximum Temperature, °F | 390 | 390 | 390 | 390 | 390 | 390 | 390 | 390 |
| Materials of Construction (1) | | | | | | | | |
| Head & Body | 316L | 316L | 316L | 316L | 316L | 316L | 316L | 316L |
| Filter Element Code (3) | 12.32.□ | 12.32.□ | 12.57.□ | 12.57.□ | 25.64.□ | 25.64.□ | 25.178.□ | 25.178.□ |
| Adsorber Cartridge Code (4) | 12.32.AD□ | 12.32.AD□ | 12.57.AD□ | 12.57.AD□ | 25.64.AD□ | 25.64.AD□ | 25.178.AD□ | 25.178.AD□ |
| Principle Dimensions in inches | | | | | | | | |
| Diameter | 0.75 | 0.75 | 0.75 | 0.75 | 1.50 | 1.50 | 1.50 | 1.50 |
| Height | 1.55 | 1.55 | 2.55 | 2.55 | 3.00 | 3.00 | 7.50 | 7.50 |
| Weight, lbs | 0.20 | 0.20 | 0.20 | 0.20 | 0.35 | 0.35 | 0.35 | 0.35 |

Notes

(1) Material abbreviations, 316L Stainless Steel

(2) Replace the □ with the grade required, e.g. 12.32.5CK, 12.32.S20V, 12.32.T20



Contact Us

Classic Filters Ltd.
Sextant Park
Neptune Close
Rochester
Kent
England
ME2 4LU

T +44 (0)1634 724224
F +44 (0)1634 724234
E info@classicfilters.com
W www.classicfilters.com

Follow Us



[http://www.linkedin.com/company/classic-filters-ltd.](http://www.linkedin.com/company/classic-filters-ltd)



<http://www.twitter.com/classicfilters>