

**Materials** 316L Stainless Steel  
**Pressure** 250 psi  
**Ports** 1/8" or 1/4"

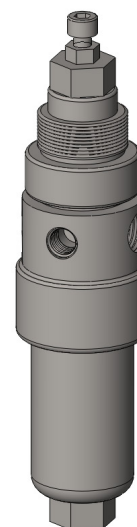
RSS123 series filter regulator housings are specified for 1/4" & 1/2" line size applications and have a filter element integrated into the regulator.

The housings are constructed from 316L stainless steel with a stainless steel bonnet. The regulators can be supplied as relieving or non-relieving and the suffix .R or .NR should be used after the part number. Gauge ports are 1/8" NPT.

Springs can be supplied for 0-30, 0-60 and 0-120 psi, see table below for part number suffix.

Standard housings have NPT ports and Viton seals.

The housings are free from welds and comply with NACE MR-01-75 and conform to SEP of PED 97/23/EC.



## Technical Specifications

Housing Model	RSS123.101	RSS123.111	RSS123.161	RSS123.201	RSS123.221	RSS123.261
Port Size	1/8" NPT	1/8" NPT	1/8" NPT	1/4" NPT	1/4" NPT	1/4" NPT
Drain Port	None	1/8" NPT	Manual	None	1/4" NPT	Manual
Maximum Pressure, psi	250	250	250	250	250	250
Maximum Temperature, °F	140	140	140	140	140	140
<b>Materials of Construction (1)</b>						
Body	316L SS	316L SS	316L SS	316L SS	316L SS	316L SS
Bonnet	316L SS	316L SS	316L SS	316L SS	316L SS	316L SS
Seal & Diaphragm	Viton	Viton	Viton	Viton	Viton	Viton
Other Internal Parts	Plastic	Plastic	Plastic	Plastic	Plastic	Plastic
Filter Element Code (2)	12.57.□	12.57.□	12.57.□	12.57.□	12.57.□	12.57.□
<b>Principle Dimensions in inches</b>						
Diameter	1.55	1.55	1.55	1.55	1.55	1.55
Height	6.90	6.90	7.50	6.90	6.90	7.50
Weight, lbs	1.90	1.90	1.90	1.90	1.90	1.90
<b>Type Suffix (3)</b>						
Relieving	.R	.R	.R	.R	.R	.R
Non-relieving	.NR	.NR	.NR	.NR	.NR	.NR
<b>Spring Suffix (3)</b>						
0-30 psi	.30	.30	.30	.30	.30	.30
0-60 psi	.60	.60	.60	.60	.60	.60
0-120 psi	.120	.120	.120	.120	.120	.120
<b>Accessories</b>						
Mounting Bracket	MBRSP10	MBRSP10	MBRSP10	MBRSP10	MBRSP10	MBRSP10
Pressure Gauge (4)	SPRGA10	SPRGA10	SPRGA10	SPRGA10	SPRGA10	SPRGA10

### Notes

- (1) Material abbreviations, 316L SS = 316L Stainless Steel
- (2) Replace the □ with the grade required, e.g. 12.57.5K, 12.57.S10V
- (3) Add suffix for Relieving or Non-relieving types and for the spring type, (e.g. RSS123.201.N.120)
- (4) Add suffix for pressure range, (e.g. PRGA10.120)



## Contact Us

Classic Filters Ltd.  
Sextant Park  
Neptune Close  
Rochester  
Kent  
England  
ME2 4LU

T +44 (0)1634 724224  
F +44 (0)1634 724234  
E [info@classicfilters.com](mailto:info@classicfilters.com)  
W [www.classicfilters.com](http://www.classicfilters.com)

## Follow Us



<http://www.linkedin.com/company/classic-filters-ltd.>



<http://www.twitter.com/classicfilters>