

SM015

SP76 Modular Membrane Housing

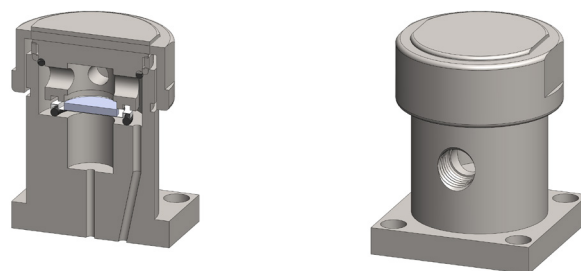
Materials 316L SS
Pressure 100 Bar
Ports SP76 & 1/8"
Membrane MT.19.□

The SM015 series SP76 membrane housings are designed for SP76 compliant modular sample systems. The housings use a porous PTFE membrane which is supported by a sintered porous stainless steel disc on the outlet side.

Any liquid in the sample will flow to the 1/8" NPT drain port. The housings should only be used on substrates that are mounted in the horizontal plane with the drain port at the lowest point below the inlet and outlet ports.

The housing design allows a quick change of the membrane as all the line connections are arranged in the body of the housing and the threaded cap means no tools are required for access.

The housings are free from welds and comply with NACE MR-01-75 and are CE marked in accordance with PED 97/23/EC.



Technical Specifications

| Housing Model | SM015.L11 | SM015.R11 |
|--------------------------------------|---------------|---------------|
| Inlet/Outlet Connections | SP76 | SP76 |
| Drain | 1/8" NPT | 1/8" NPT |
| Maximum Pressure, Bar | 100 | 100 |
| Maximum Temperature, °C (1) | 150 | 150 |
| Flow Direction | Left to Right | Right to Left |
| Substrate Plane | Horizontal | Horizontal |
| Inlet | Hole 2 | Hole 2 |
| Outlet | Hole 3 | Hole 1 |
| Materials of Construction (2) | | |
| Head, Bowl & Internals | 316L SS | 316L SS |
| Seals (3) | Viton | Viton |
| Membrane Code (4) | MT.19.□ | MT.19.□ |
| Principal Dimensions in mm | | |
| Diameter | 38 | 38 |
| Height | 48.5 | 48.5 |
| Volume, cc | 5 | 5 |
| Weight, kg | 0.3 | 0.3 |

Notes

(1) Maximum temperature of 150°C is due to the PTFE membrane

(2) Material abbreviations, 316L SS = 316L Stainless Steel

(2) Add suffix for other seal types, PTFE = .T, Chemraz = .C, Nitrile = N, Kalrez = .K, EPDM = .E, Silicone = .S, (e.g. SM015.L11.T)

(3) Replace the □ with the grade required, e.g. MT.19.M2



Contact Us

Classic Filters Ltd.
Sextant Park
Neptune Close
Rochester
Kent
England
ME2 4LU

T +44 (0)1634 724224
F +44 (0)1634 724234
E info@classicfilters.com
W www.classicfilters.com

Follow Us



<http://www.linkedin.com/company/classic-filters-ltd.>



<http://www.twitter.com/classicfilters>