

NT Series

Twin Polyamide Filter Housing

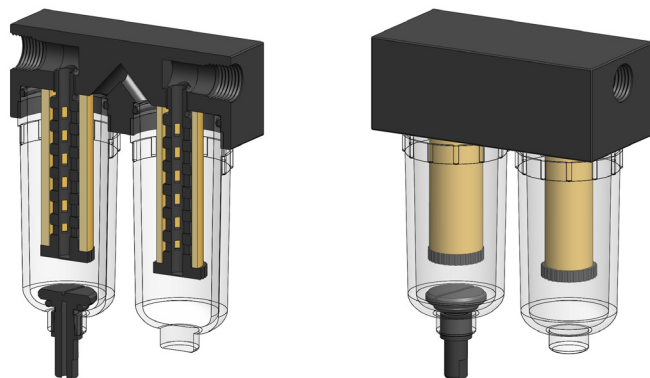
| | |
|------------------|------------------------------|
| Materials | Polyamide |
| Pressure | 7 Bar |
| Ports | 1/4" |
| Element | 12.32.□ & 12.57.□ |

NT series twin filter housings have two elements and bowls fitted to a single head. The first stage is a pre-filter or coalescing element and the second stage a particulate element.

They are constructed entirely from polyamide and the bowls use a clear polyamide.

They are supplied with 1/4" ports and have a range of drain options. There are two mounting holes in the back face of the head for neat installation.

Standard housings have a Viton seal. Other seal types are available as an option. BSPT and BSPP port types are also available.



Technical Specifications

| Housing Model | NT1111.2601 | NT1111.2101 | NT1211.2601 | NT1211.2101 | NT1221.2601 | NT1221.2101 |
|--------------------------------------|-------------|-------------|-------------|-------------|-------------|-------------|
| Port Size | 1/4" NPT | 1/4" NPT | 1/4" NPT | 1/4" NPT | 1/4" NPT | 1/4" NPT |
| Drain - 1st Stage | Manual | 1/8" NPT | Manual | 1/8" NPT | Manual | 1/8" NPT |
| Drain - 2nd Stage | None | None | None | None | None | None |
| Maximum Pressure, Bar | 7 | 7 | 7 | 7 | 7 | 7 |
| Maximum Temperature, °C | 50 | 50 | 50 | 50 | 50 | 50 |
| Materials of Construction (1) | | | | | | |
| Head, Bowl & Internals | PA | PA | PA | PA | PA | PA |
| Seals (2) | Viton | Viton | Viton | Viton | Viton | Viton |
| Filter Element Code - 1st Stage (3) | 12.32.□ | 12.32.□ | 12.57.□ | 12.57.□ | 12.57.□ | 12.57.□ |
| Filter Element Code - 2nd Stage | 12.32.□ | 12.32.□ | 12.32.□ | 12.32.□ | 12.57.□ | 12.57.□ |
| Principal Dimensions in mm | | | | | | |
| Length over ports | 90 | 90 | 90 | 90 | 90 | 90 |
| Height | 80 | 80 | 95 | 95 | 95 | 95 |
| Volume, cc | 95 | 95 | 100 | 100 | 105 | 105 |
| Weight, kg | 0.2 | 0.2 | 0.2 | 0.2 | 0.2 | 0.2 |

Notes

(1) Material abbreviations, PA = Polyamide

(2) Add suffix for other seal types, Chemraz = .C, Nitrile = N, Kalrez = .K, EPDM = .E, Silicone = .S, (e.g. NT1111.2101.E)

(3) Replace the □ with the grade required, e.g. 12.32.8CK & 12.32.6K



Contact Us

Classic Filters Ltd.
Sextant Park
Neptune Close
Rochester
Kent
England
ME2 4LU

T +44 (0)1634 724224
F +44 (0)1634 724234
E info@classicfilters.com
W www.classicfilters.com

Follow Us



<http://www.linkedin.com/company/classic-filters-ltd.>



<http://www.twitter.com/classicfilters>