

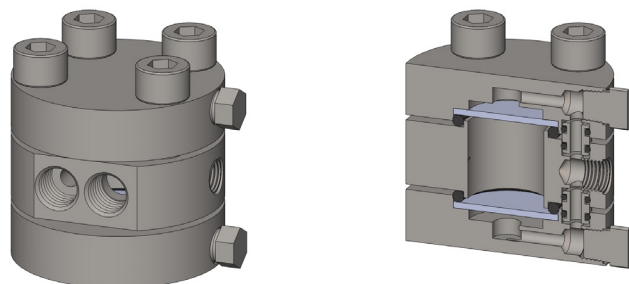
<b>Materials</b>	<b>316L Stainless Steel</b>
<b>Pressure</b>	<b>3000 psi</b>
<b>Ports</b>	<b>1/8" or 1/4"</b>
<b>Filter Disc</b>	<b>2x FD.33.□</b>

The STW106 series uses two stainless steel filter discs in one housing. A 'cyclone' effect is created as the sample enters the housing and proportion of it passes through the filters to the sample outlet port and the rest of the sample passes to the bypass port.

The housing design allows the filter discs to be changed without disconnection the port fittings.

Standard housings have NPT ports and include Viton seals. Other seal types are available as an option. BSPT and BSPP port types are also available.

The housings are free from welds and comply with NACE MR-01-75.



## Technical Specifications

Housing Model	STW106.111	STW106.211
Port Size	1/8" NPT	1/4" NPT
Drain & Bypass Port	1/8" NPT	1/8" NPT
Maximum Pressure, psi (1)	3000	3000
Maximum Temperature, °F (2)	390	390
<b>Materials of Construction (3)</b>		
Head, Bowl & Internals	316L SS	316L SS
Seals (4)	Viton	Viton
Filter Disc (5)	2x FD.33.□	2x FD.33.□
<b>Principle Dimensions in inches</b>		
Diameter	2.50	2.50
Height	1.83	1.83
Volume, cc	20	20
Weight, lbs	2.10	2.10
<b>Accessories</b>		
Mounting Bracket		

### Notes

- (1) Above 390°F the pressure rating is reduced, consult us the exact rating at any specific temperature
- (2) Maximum temperature 390°F using standard seal
- (3) Material abbreviations, 316L SS = 316L Stainless Steel
- (4) Add suffix for other seal types, Chemraz = .C, Nitrile = N, Kalrez = .K, EPDM = .E, Silicone = .S, (e.g. STW106.221.E)
- (5) Replace the □ with the filter disc grade required, e.g. FD.33.S20V



## Contact Us

Classic Filters Ltd.  
Sextant Park  
Neptune Close  
Rochester  
Kent  
England  
ME2 4LU

T +44 (0)1634 724224  
F +44 (0)1634 724234  
E [info@classicfilters.com](mailto:info@classicfilters.com)  
W [www.classicfilters.com](http://www.classicfilters.com)

## Follow Us



[http://www.linkedin.com/company/classic-filters-ltd.](http://www.linkedin.com/company/classic-filters-ltd)



<http://www.twitter.com/classicfilters>