

# PTFE Membranes

## Grades & Dimensions

**PTFE porous membranes are manufactured from a pure PTFE. They have a good strength, but remain flexible for easy installation. PTFE membranes are extremely inert and have very low absorption levels.**

Microscopic pores in the membrane allow the gas to flow through easily, but even the smallest liquid aerosols are prevented. The high surface tension of the liquid molecules causes them to be formed tightly together making them too large to fit through the pores of the membrane.

PTFE membranes are available in a range of standard diameters. These are based on traditional industry standard sizes and allow the elements to be installed in other proprietary equipment.

### Standard Sizes

MT.19.□ MT.33.□ MT.47.□ MT.61.□ MT.89.□ MT.101.□

Replace the □ in the part numbers with the grade from the tables below.

### Standard Grades (Gas Applications)

Grade	Type	Pore Size	Thickness
<b>M1</b>	Hydrophobic	0.1 µm	50 µm
<b>M2</b>	Hydrophobic	0.8 µm	50 µm
<b>M3</b>	Hydrophobic & Oleophobic	0.1 µm	50 µm
<b>M4</b>	Hydrophobic & Oleophobic	0.8 µm	50 µm

## Liquid/Liquid Applications

The principles are the same as for the gas application membranes - the higher surface tension of the water molecules cause them to be formed tightly together making them too large to fit through the pores of the membrane.

The M8 and M9 grades have a special support layer on the reverse of the membrane to increase the maximum pressure drop.

To ensure water is removed from the liquid hydrocarbon stream, the contact time with the membrane should be maximised and the SML housings feature a special flow-path to do this.

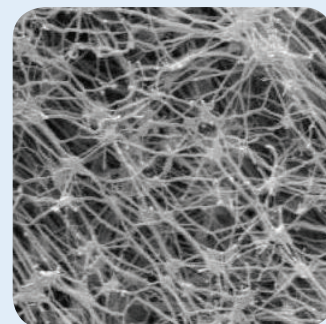
### Standard Grades (Liquid/Liquid Applications)

Grade	Type	Pore Size	Thickness
<b>M8</b>	Hydrophobic with PE Support Layer	0.8 µm	150 µm
<b>M9</b>	Hydrophobic with PP Support Layer	0.8 µm	150 µm

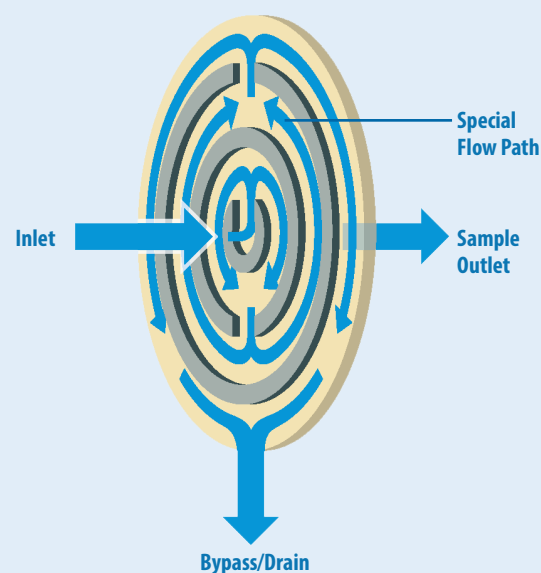
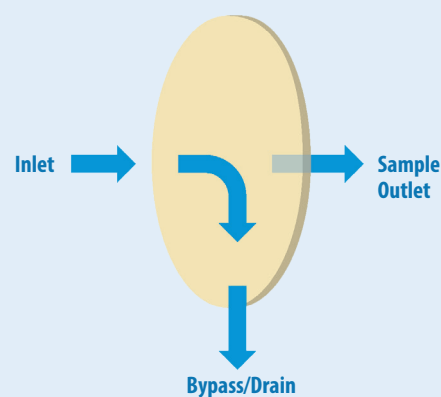
## Special Sizes

Special size membranes can also be manufactured in a range of different diameters.

Please enquire with any specific requirements.



PTFE Membrane





## Contact Us

Classic Filters Ltd.  
Sextant Park  
Neptune Close  
Rochester  
Kent  
England  
ME2 4LU

T +44 (0)1634 724224  
F +44 (0)1634 724234  
E [info@classicfilters.com](mailto:info@classicfilters.com)  
W [www.classicfilters.com](http://www.classicfilters.com)

## Follow Us



[http://www.linkedin.com/company/classic-filters-ltd.](http://www.linkedin.com/company/classic-filters-ltd)



<http://www.twitter.com/classicfilters>