

# SS125.F

## Float Valve Housing

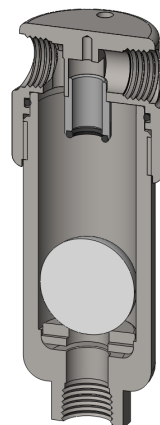
**Materials** 316L Stainless Steel  
**Pressure** 1500 psi  
**Ports** 1/8", 1/4" & 1/2"

SS125.F series float valve housings are based on our standard SS127 series and have a PVDF float ball to shut off the flow when collected liquids reach a certain level.

Special and custom housing can also be supplied with internal arrangements to suit specific applications.

Standard housings have NPT ports and a Viton seal. Other seal types are available as an option. BSPT and BSPP port types are also available.

The housings are free from welds and comply with NACE MR-01-75 and are CE marked in accordance with PED 2014/68/EU.



### Technical Specifications

Housing Model	SS125.111.F	SS125.221.F	SS125.421.F
Port Size	1/8" NPT	1/4" NPT	1/2" NPT
Drain	1/8" NPT	1/4" NPT	1/4" NPT
Maximum Pressure, psi	1500	1500	1500
Maximum Temperature, °F	210	210	210
<b>Materials of Construction (1)</b>			
Head, Bowl & Internals	316L SS	316L SS	316L SS
Float Ball	PVDF	PVDF	PVDF
Seals (2)	Viton	Viton	Viton
<b>Principle Dimensions in inches</b>			
Diameter	1.40	1.40	1.95
Height	4.05	4.05	4.55
Volume, cc	35	35	37.5
Weight, lbs	1.10	1.10	1.90
<b>Accessories</b>			
Mounting Bracket	MB.SS11	MB.SS11	MB.SS21

#### Notes

(1) Material abbreviations, 316L SS = 316L Stainless Steel, PVDF = Polyvinylidene difluoride

(2) Add suffix for other seal types, PTFE = .T, Chemraz = .C, Nitrile = N, Kalrez = .K, EPDM = .E, Silicone = .S, (e.g. SS125.421.F.T)



## Contact Us

Classic Filters Ltd.  
Sextant Park  
Neptune Close  
Rochester  
Kent  
England  
ME2 4LU

T +44 (0)1634 724224  
F +44 (0)1634 724234  
E [info@classicfilters.com](mailto:info@classicfilters.com)  
W [www.classicfilters.com](http://www.classicfilters.com)

## Follow Us



[http://www.linkedin.com/company/classic-filters-ltd.](http://www.linkedin.com/company/classic-filters-ltd)



<http://www.twitter.com/classicfilters>