

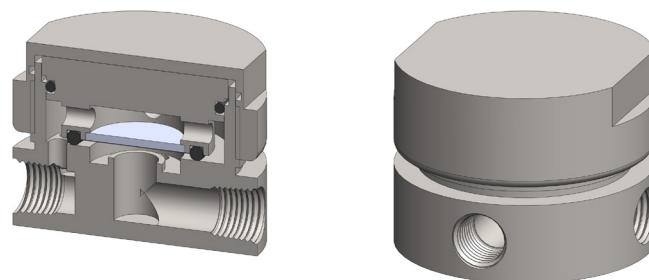
**Materials** 316L Stainless Steel  
**Pressure** 3000 psi  
**Ports** 1/8" or 1/4"  
**Membrane** MT.33.□

SM106 membrane housings use a porous PTFE membrane, which is supported by a sintered porous stainless steel disc on the outlet side. Any liquid in the gas sample will flow to the drain port. This port can also be used as a bypass function for the main flow.

The housing design allows a quick change of the membrane as all the line connections are arranged in the body of the housing and the threaded cap means no tools are required for access.

Standard housings have NPT ports and include Viton seals. Other seal types are available as an option. BSPP and BSPP port types are also available.

The housings are free from welds and comply with NACE MR-01-75.



## Technical Specifications

Housing Model	SM106.111	SM106.221
Port Size	1/8" NPT	1/4" NPT
Drain & Bypass Ports	1/8" NPT	1/4" NPT
Maximum Pressure, psi	3000	3000
Maximum Temperature, °F (1)	300	300
<b>Materials of Construction (2)</b>		
Head, Bowl & Internals	316L SS	316L SS
Seals (3)	Viton	Viton
Membrane Code (4)	MT.33.□	MT.33.□
<b>Principle Dimensions in inches</b>		
Diameter	2.50	2.50
Height	1.85	1.85
Volume, cc	10	10
Weight, lbs	2.10	2.10
<b>Accessories</b>		
Mounting Bracket	MB.SM106	MB.SM106

### Notes

- (1) Maximum temperature of 300°F is due to the PTFE membrane
- (2) Material abbreviations, 316L SS = 316L Stainless Steel
- (3) Add suffix for other seal types, Chemraz = .C, Nitrile = N, Kalrez = .K, EPDM = .E, Silicone = .S, (e.g. SM106.221.K)
- (4) Replace the □ with the membrane grade required, e.g. MT.33.M2



## **Contact Us**

**Classic Filters Ltd.  
Sextant Park  
Neptune Close  
Rochester  
Kent  
England  
ME2 4LU**

**T     +44 (0)1634 724224  
F     +44 (0)1634 724234  
E     [info@classicfilters.com](mailto:info@classicfilters.com)  
W     [www.classicfilters.com](http://www.classicfilters.com)**

## **Follow Us**



**[http://www.linkedin.com/company/classic-filters-ltd.](http://www.linkedin.com/company/classic-filters-ltd)**



**<http://www.twitter.com/classicfilters>**