

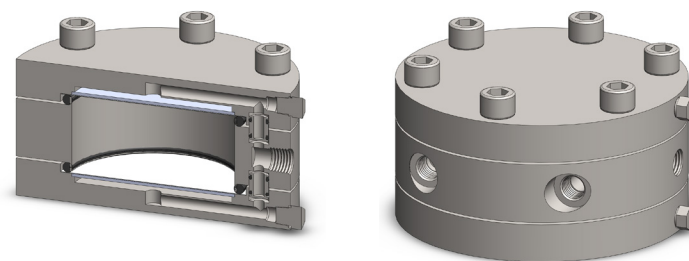
Materials 316L Stainless Steel
Pressure 500 psi
Ports 1/4" or 1/2"
Membrane 2x MT.101.□

STM304 membrane housings use two porous PTFE membranes, which are supported by sintered porous stainless steel discs on the outlet side. Any liquid in the gas sample will flow to the drain port. This port can also be used as a bypass function for the main flow.

The housing design allows the membranes to be changed without disconnection of the port fittings.

Standard housings have NPT ports and include Viton seals. Other seal types are available as an option. BSPT and BSPP port types are also available.

The housings are free from welds and comply with NACE MR-01-75.



Technical Specifications

Housing Model

STM304.221

STM304.441

Port Size 1/4" NPT
 Drain & Bypass Ports 1/4" NPT
 Maximum Pressure, psi 500
 Maximum Temperature, °F (1) 300

1/2" NPT
 1/2" NPT
 500
 300

Materials of Construction (2)

Head, Bowl & Internals 316L SS
 Seals (3) Viton
 Membrane Code (4) 2x MT.101.□

316L SS
 Viton
 2x MT.101.□

Principle Dimensions in inches

Diameter 5.90
 Height 2.90
 Volume, cc 50
 Weight, lbs 16.50

5.90
 2.90
 50
 16.50

Accessories

Mounting Bracket MB.SM304

MB.SM304

Notes

- (1) Maximum temperature of 300°F is due to the PTFE membrane
- (2) Material abbreviations, 316L SS = 316L Stainless Steel
- (3) Add suffix for other seal types, PTFE = .T, Chemraz = .C, Nitrile = N, Kalrez = .K, EPDM = .E, Silicone = .S, (e.g. STM304.221.T)
- (4) Replace the □ with the membrane grade required, e.g. MT.101.M2



Contact Us

Classic Filters Ltd.
Sextant Park
Neptune Close
Rochester
Kent
England
ME2 4LU

T +44 (0)1634 724224
F +44 (0)1634 724234
E info@classicfilters.com
W www.classicfilters.com

Follow Us



<http://www.linkedin.com/company/classic-filters-ltd.>



<http://www.twitter.com/classicfilters>