

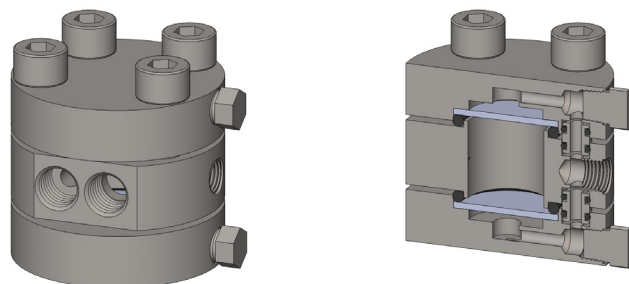
Materials	316L Stainless Steel
Pressure	3000 psi
Ports	1/8" or 1/4"
Filter Disc	2x FD.33.□

The STW106 series uses two stainless steel filter discs in one housing. A 'cyclone' effect is created as the sample enters the housing and proportion of it passes through the filters to the sample outlet port and the rest of the sample passes to the bypass port.

The housing design allows the filter discs to be changed without disconnection of the port fittings.

Standard housings have NPT ports and include Viton seals. Other seal types are available as an option. BSPT and BSPP port types are also available.

The housings are free from welds and comply with NACE MR-01-75.



Technical Specifications

Housing Model	STW106.111	STW106.211
Port Size	1/8" NPT	1/4" NPT
Drain & Bypass Port	1/8" NPT	1/8" NPT
Maximum Pressure, psi (1)	3000	3000
Maximum Temperature, °F (2)	390	390
Materials of Construction (3)		
Head, Bowl & Internals	316L SS	316L SS
Seals (4)	Viton	Viton
Filter Disc (5)	2x FD.33.□	2x FD.33.□
Principle Dimensions in inches		
Diameter	2.50	2.50
Height	1.83	1.83
Volume, cc	20	20
Weight, lbs	2.10	2.10
Accessories		
Mounting Bracket	MB.STW106	MB.STW106

Notes

- (1) Above 390°F the pressure rating is reduced, consult us the exact rating at any specific temperature
- (2) Maximum temperature 390°F using standard seal
- (3) Material abbreviations, 316L SS = 316L Stainless Steel
- (4) Add suffix for other seal types, Chemraz = .C, Nitrile = N, Kalrez = .K, EPDM = .E, Silicone = .S, (e.g. STW106.221.E)
- (5) Replace the □ with the filter disc grade required, e.g. FD.33.S20V



Contact Us

Classic Filters Ltd.
Sextant Park
Neptune Close
Rochester
Kent
England
ME2 4LU

T +44 (0)1634 724224
F +44 (0)1634 724234
E info@classicfilters.com
W www.classicfilters.com

Follow Us



[http://www.linkedin.com/company/classic-filters-ltd.](http://www.linkedin.com/company/classic-filters-ltd)



<http://www.twitter.com/classicfilters>